

MEADOWS OF WESTLAKE - PHASE II

A SUBDIVISION IN SECTION 6, TOWNSHIP 43 SOUTH, RANGE 41 EAST, CITY OF WESTLAKE, PALM BEACH COUNTY, FLORIDA, BEING A REPLAT OF TRACT R AND OPEN SPACE TRACT #10 THROUGH OPEN SPACE TRACT #14 INCLUSIVE, MEADOWS OF WESTLAKE - PHASE I, PLAT BOOK 127, PAGES 140 THROUGH 153, PUBLIC RECORDS OF PALM BEACH COUNTY, FLORIDA

TOWNSHIP 42 SOUTH, RANGE 41 EAST
TOWNSHIP 43 SOUTH, RANGE 41 EAST

NORTH LINE OF SECTION 6,
TOWNSHIP 43 S., RANGE 41 E

NORTH RIGHT-OF-WAY
LINE OF M-CANAL
(D.B. 1156, PG. 58)

M-CANAL

M CANAL 250' CITY OF WEST PALM
BEACH RIGHT-OF-WAY
(D.B. 1156, PG. 58)

80' CITY OF WEST PALM
BEACH EASEMENT
(D.B. 1156, PG. 58)

M-CANAL

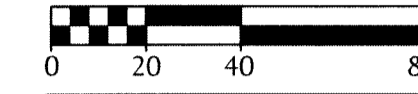
UNPLATTED

NORTH BOUNDARY OF
MEADOWS OF WESTLAKE - PHASE I
(P.B. 127, PG(s). 140-153)

UNPLATTED

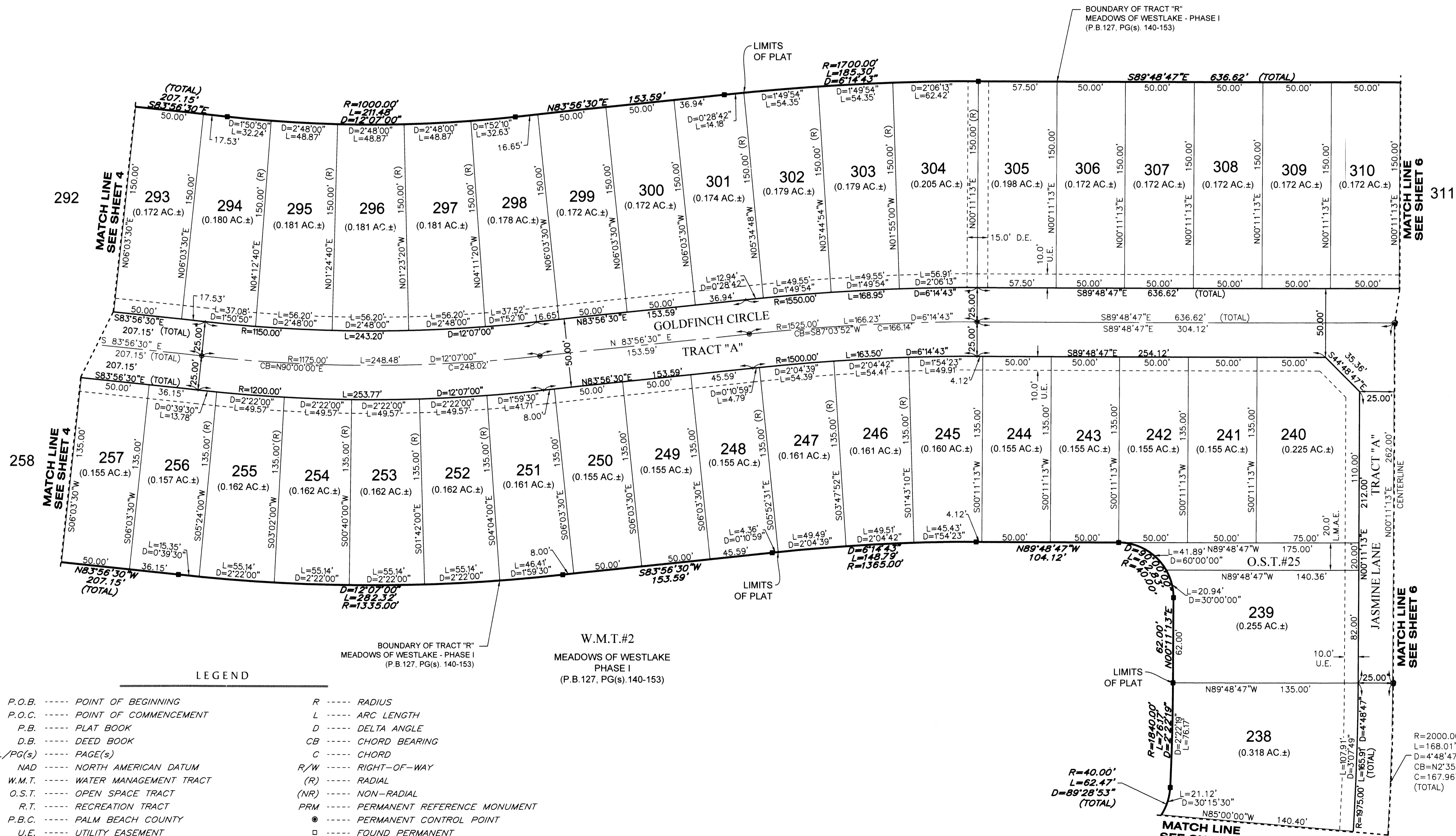
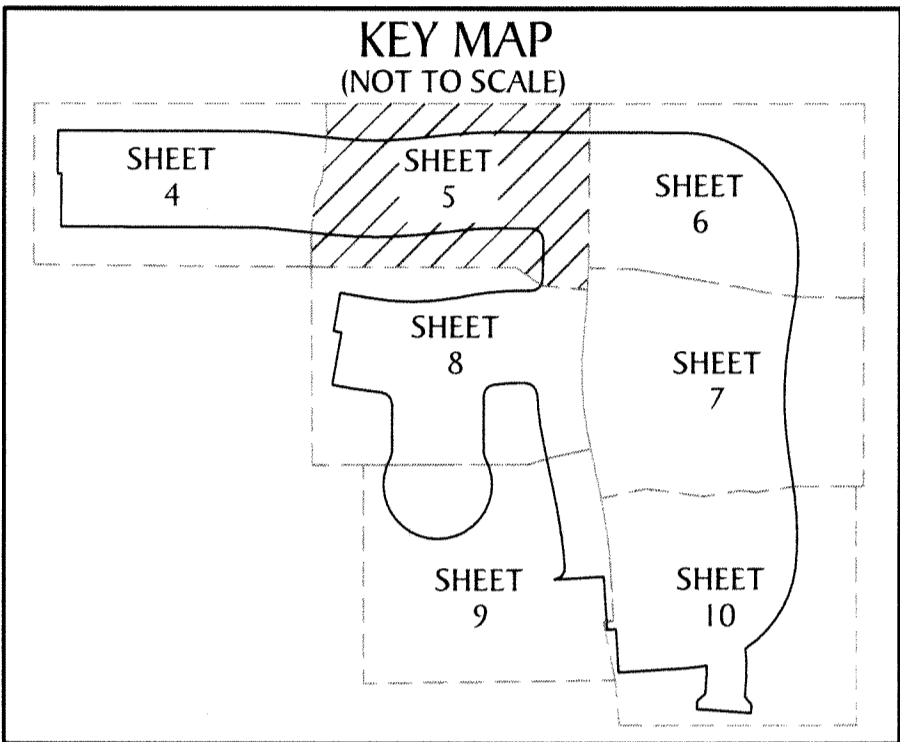
101

SCALE 1" = 40'



SEE NOTE ON SHEET 2
FOR BASIS OF BEARINGS

W.M.T.#1
MEADOWS OF WESTLAKE
PHASE I
(P.B. 127, PG(s). 140-153)



- LEGEND**
- P.O.B. ----- POINT OF BEGINNING
 - P.O.C. ----- POINT OF COMMENCEMENT
 - P.B. ----- PLAT BOOK
 - D.B. ----- DEED BOOK
 - PG./PG(s) ----- PAGE(S)
 - NAD ----- NORTH AMERICAN DATUM
 - W.M.T. ----- WATER MANAGEMENT TRACT
 - O.S.T. ----- OPEN SPACE TRACT
 - R.T. ----- RECREATION TRACT
 - P.B.C. ----- PALM BEACH COUNTY
 - U.E. ----- UTILITY EASEMENT
 - D.E. ----- DRAINAGE EASEMENT
 - L.M.A.E. ----- LAKE MAINTENANCE ACCESS EASEMENT
 - 6-43-41 ----- SECTION-TOWNSHIP-RANGE
 - R ----- RADIUS
 - L ----- ARC LENGTH
 - D ----- DELTA ANGLE
 - CB ----- CHORD BEARING
 - C ----- CHORD
 - R/W ----- RIGHT-OF-WAY
 - (R) ----- RADIAL
 - (NR) ----- NON-RADIAL
 - PRM ----- PERMANENT REFERENCE MONUMENT
 - ----- PERMANENT CONTROL POINT
 - ----- FOUND PERMANENT REFERENCE MONUMENT
 - ----- SET 4"x4" CONCRETE MONUMENT WITH 2" ALUMINUM DISK STAMPED "PRM LB 7768"



4152 W. Blue Heron Blvd.
Suite 105
Riviera Beach, FL 33404
Phone: (561) 444-2720
www.geopointsurvey.com
Licensed Business Number LB 7768